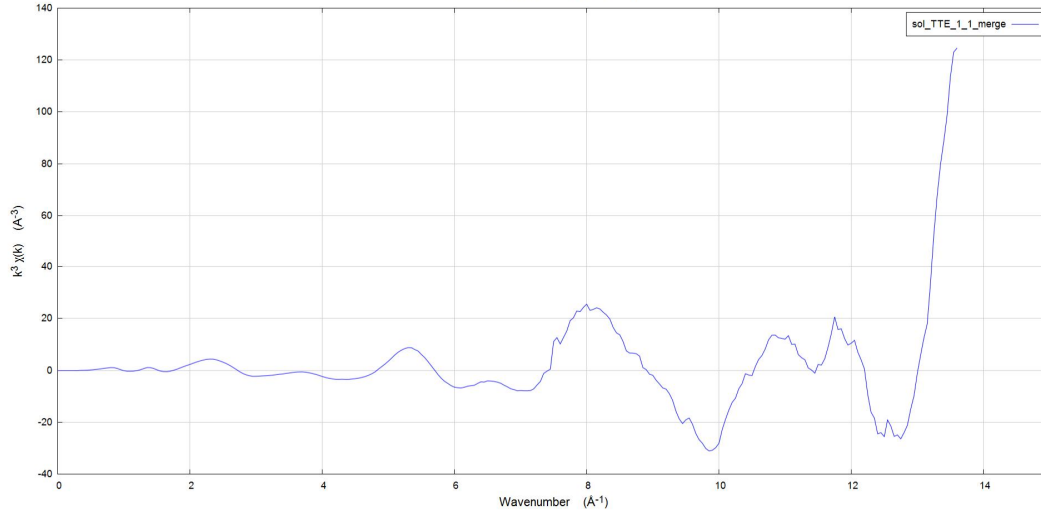


sol_TTE_1_1_merge in k space



-0.379023, -8.66301

Element: 16: Sulfur Edge: K Energy shift: 0 Importance: 1

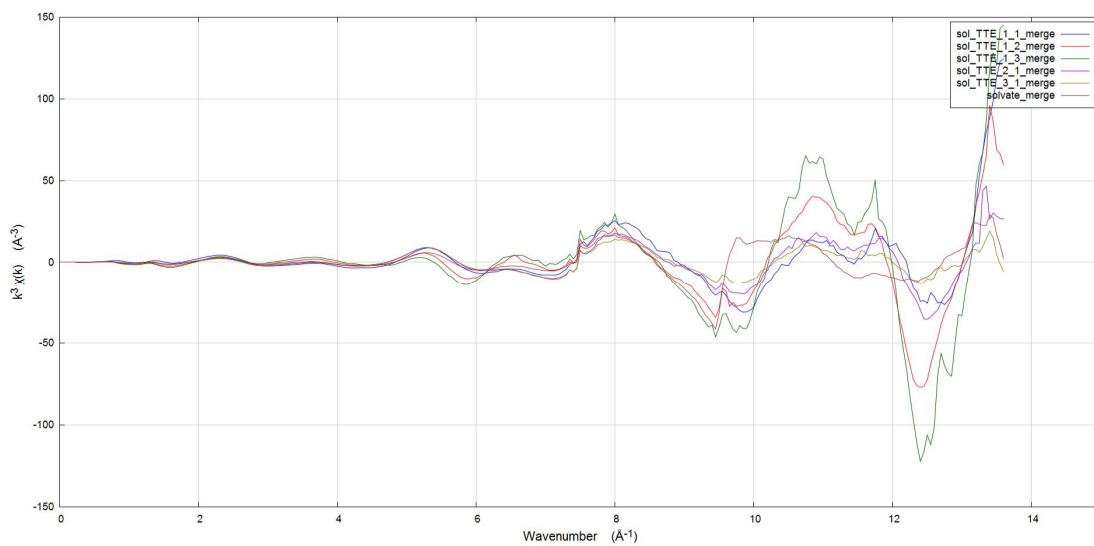
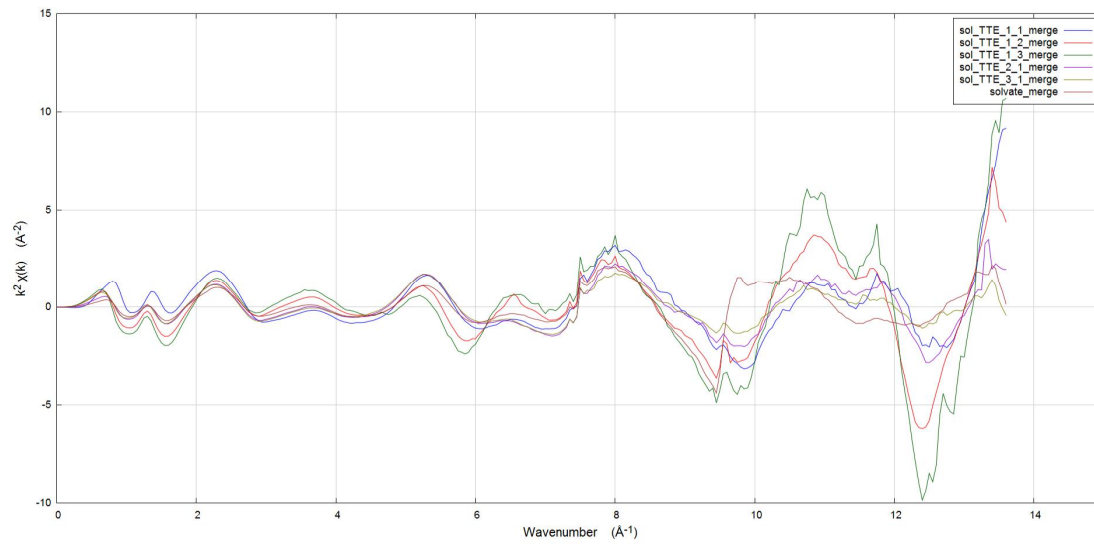
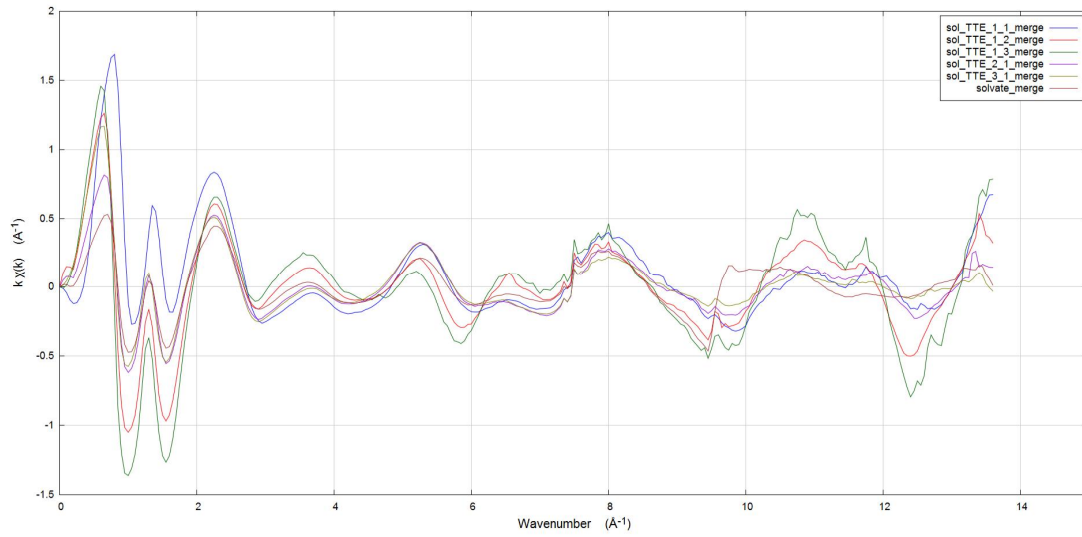
Normalization and background removal parameters
E0: 2478.7 Normalization order: 1 2 3
Pre-edge range: -79 to -25.000 Flatten normalized data:
Normalization range: 40 to 715 Edge step: 0.15104 fix:
Rbkg: 0.7 k-weight: 2 Spline clamps: low Slight high Rigid
Spline range in k: 0 to 13.669
Spline range in E: 0 to 711.863
Standard: None Energy-dependent normalization:

Forward Fourier transform parameters
k-range: 2.650 to 11.417 dk: 1 window: Kaiser-Bessel
arbitrary k-weight: 0.5 phase correction:

Backward Fourier transform parameters
R-range: 0 to 6 dR: 0.0 window: Kaiser-Bessel

Plotting parameters
Plot multiplier: 1 y-axis offset: 0

Plotting k-weights: 0 1 2 3 kw
Plot in k-space: chi(E) chi(E) Background Window
kmin: 0 kmax: 15



Element: 16: Sulfur Edge: K Energy shift: 0 Importance: 1

Normalization and background removal parameters

EO: 2479.5086 Normalization order: 1 2 3

Pre-edge range: -79 to -25.000 Flatten normalized data

Normalization range: 40 to 711.786 Edge step: 0.06811 fix

Rbkg: 0.7 k-weight: 2 Spline clamps: low None

Spline range in k: 0 to 13.668 high None

Spline range in E: 0 to 711.759 high None

Standard: None Energy-dependent normalization

Forward Fourier transform parameters

k-range: 2.697 to 11.967 dk: 1 window: Kaiser-Bessel

arbitrary k-weight: 0.5 phase correction

Backward Fourier transform parameters

R-range: 0 to 6 dR: 0.0 window: Kaiser-Bessel

Plotting parameters

Plot multiplier: 1 y-axis offset: 0

Plotting k-weights: 0 1 2 3 kw

Plot in k-space

x(E) x(E)

Background

Window

kmin: 0 kmax: 15

- LITFSL_standard_merge
- LITFSL_LiNO3_ACN_merge
- LITFSL_LiNO3_DOLDME_merge
- sol_TTE_1_1_merge
- sol_TTE_1_2_merge
- sol_TTE_1_3_merge
- sol_TTE_2_1_merge
- sol_TTE_3_1_merge
- solvate_merge
- 1M_LITFSL_DOLDME_p_merge
- sol_TTE_1_1_001_A.001

E k R q kq

E k R q

Plotting k-weights

0 1 2 3 kw

Plot in k-space

x(E) x(E)

Background

Window